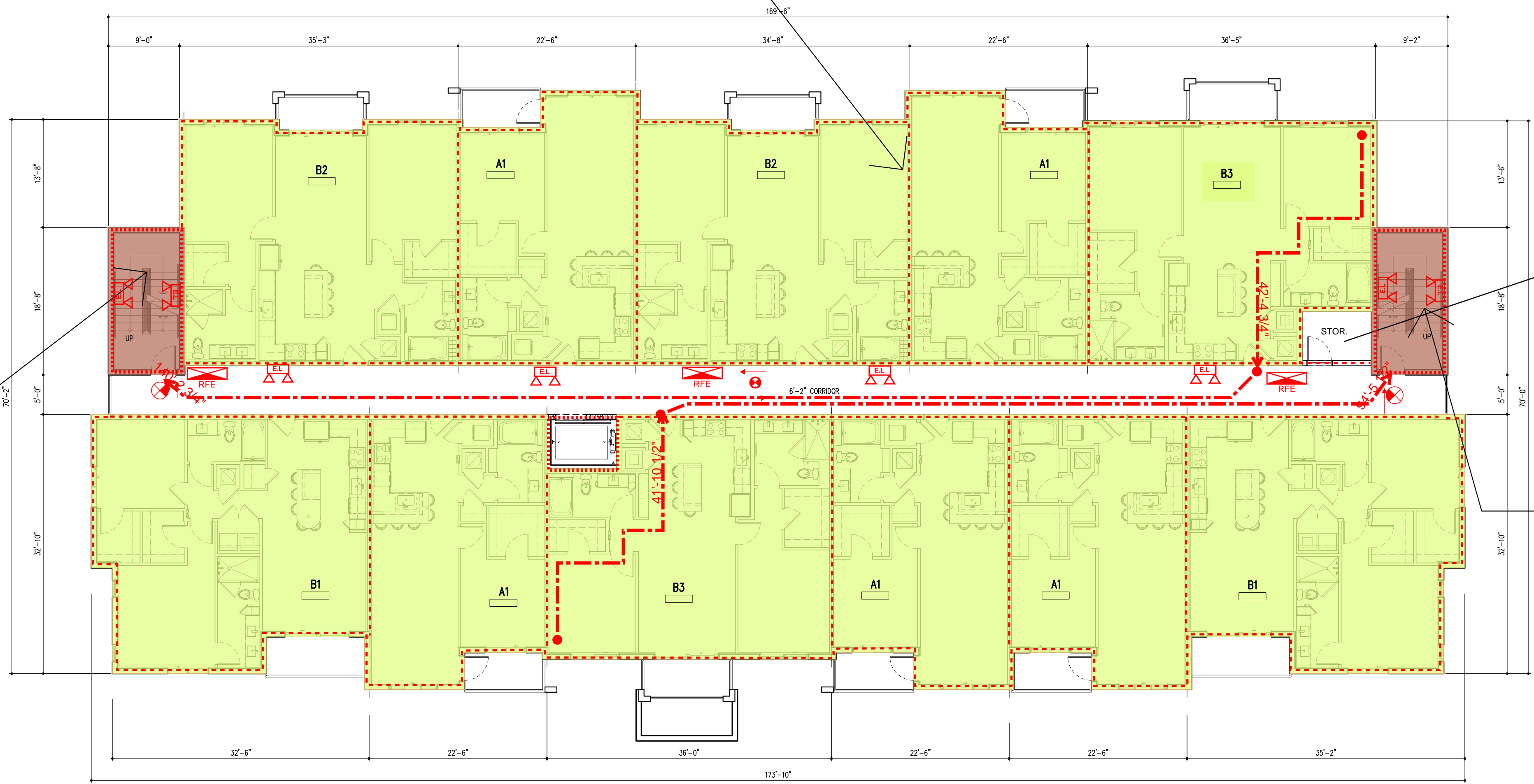


STAIR No. # 1	
EGRESS CAPACITY FACTOR: 0.3	
147 OCCP.	44" STAIR

STAIR No. # 1 – DOOR	
EGRESS CAPACITY FACTOR: 0.2	
170 OCCP.	34" OPENING



STORAGE ROOM
60 SQ. FT.
@ 300 S.F. PER OCCUP.
1-OCCUP. LOAD

STAIR No. # 2	
EGRESS CAPACITY FACTOR: 0.3	
147 OCCP.	44" STAIR

STAIR No. # 2 – DOOR	
EGRESS CAPACITY FACTOR: 0.2	
170 OCCP.	34" OPENING

LIFE SAFETY PLAN LEGEND

--- TRAVEL DISTANCE (200 FT PROTECTED W/ AUTOMATIC FIRE SPRINKLERS)

S.F.E. SURFACE FIRE EXTINGUISHER
S.F.E. SURFACE FIRE EXTINGUISHER (IN CABINET)
R.F.E. RECESSED FIRE EXTINGUISHER-2A-10 (IN RATED CABINET) @ 75'-0" TRAVEL MAX.
34" POINT OF EXIT DISCHARGE, EXIT, DESIGNATION OF EXIT WIDTH
EXIT SIGN - SPACED 100'-0" MAX. VIEWING DISTANCE PER FBC 1006.3.2 (SHADED AREA INDICATES ILLUMINATED SIGN FACE)
FIRE HOSE VALVE CONNECTION
EMERGENCY LIGHT W/ BATTERY PACK

20-MIN. RATED DOOR REFER TO DOOR SCHEDULE
3/4-HOUR (45-MIN.) RATED DOOR REFER TO DOOR SCHEDULE
1-1/2-HOUR (90-MIN.) RATED DOOR REFER TO DOOR SCHEDULE

FIRE RATED SEPARATIONS

1HR. RATED BUT NOT LESS THAN REQUIRED BY TABLE 601 OF THE FBC
2HR. RATED BUT NOT LESS THAN REQUIRED BY TABLE 601 OF THE FBC
3HR. RATED BUT NOT LESS THAN REQUIRED BY TABLE 601 OF THE FBC

NOTE:
FIRE RATINGS SHOWN ON LIFE SAFETY PLANS ARE FIRE SEPARATION REQUIREMENTS AS PER THE FBC AND NFPA 101. REFER TO FBC TABLE 601, "FIRE-RESISTANCE RATING REQUIREMENTS FOR BUILDING ELEMENTS" FOR FIRE RATING REQUIREMENTS OF STRUCTURAL ELEMENTS. REFER TO STRUCTURAL DRAWINGS FOR LOCATION OF ALL STRUCTURAL ELEMENTS.

ACCESSIBLE MEANS OF EGRESS

1. THERE WILL BE A MAXIMUM OF 1/2" CHANGE IN ELEVATION AT EXIT DOOR THRESHOLDS.
2. ALL WALKWAYS LEADING TO PUBLIC WAY SHALL HAVE A SLOPE NOT GREATER THAN 1:20
3. THE FLOOR ON EACH SIDE OF DOORS IN A MEAN OF EGRESS SHALL BE LEVEL AT LEAST WITHIN THE REQUIRED MANEUVERING CLEARANCES AT EACH SIDE OF THE DOOR.

BUILDING SIGNAGE

XXXX PROVIDE RESIDENTIAL BUILDING ADDRESS SIGN(S) IN CONTRASTING COLOR, 10" MIN. IN HEIGHT. REFER TO LS-LIFE SAFETY FLOOR PLAN(S) (THIS SHEET) AND BUILDING ELEVATION SERIES "B" SHEETS FOR LOCATION AND FURTHER REFERENCE.
XXXX PROVIDE RESIDENTIAL UNIT NUMBER SIGN(S) WITH MIN '3" LETTERS. PROVIDED SIGN ADJACENT TO EACH UNIT ENTRY DOOR @ 72" A.F.F.
R PROVIDE PLACARD FOR LIGHT FRAME ROOF, AS PER FLORIDA STATE RULE 69A-60.0081.FOR REQUIRED FIREFIGHTER WARNING SIGNS.

BUILDING PUBLIC SAFETY RADIO ENHANCEMENT SYSTEMS SHALL COMPLY WITH NFPA 72 (2013ED) 24.5.2 AND 14.4.10 NFPA (2015ED) 11.10, POMPANO BEACH FIRE DEPT. REQUIREMENTS AND MUST BE TIED TO FACP.

LEVEL 2
11 UNITS

LIFE SAFETY PLAN-BLDG TYPE II
5 STORY/54 DU'S
11,566 GROSS SQ. FT.

SCALE: 1"=10'

DRC SUBMITTAL 06/13/2023
PZ23-12000017
07/19/2023

ARCHITECT'S BUILDING CODE STATEMENT/ TO THE BEST OF THE ARCHITECT'S KNOWLEDGE THE PLANS AND SPECIFICATIONS COMPLY WITH THE FLORIDA BUILDING CODE SEVENTH EDITION (2022) AND THE APPLICABLE FIRE SAFETY STANDARDS AS DETERMINED BY THE LOCAL AUTHORITY AND CHAPTER 633 FLORIDA STATUTES.

PRE-APP MEETING 04/04/2023
DRC SUBMITTAL 06/13/2023

BY

OAKS @ PALM AIRE
FOR: MORGUARD
LOCATED AT: POMPANO BEACH, FLORIDA

BEATRIZ ARD0094576

MSA ARCHITECTS, INC.
AACC000895
8060 SW 74th COURT
SUITE 1513
MIAMI, FLORIDA 33156
(305) 273-9911

MSA ARCHITECTS
ARCHITECTURE & PLANNING

COPYRIGHT © 2022 MSA ARCHITECTS, INC. THE ARCHITECTURAL DESIGN AND DETAIL DRAWINGS FOR THIS BUILDING AND/OR OVERALL PROJECT ARE THE LEGAL PROPERTY OF AND ALL RIGHTS ARE RESERVED BY THE ARCHITECT. THEIR USE FOR REPRODUCTION, CONSTRUCTION, OR DISTRIBUTION IS PROHIBITED UNLESS AUTHORIZED IN WRITING BY THE ARCHITECT.

DRAWN
CONTRACT DATE 10/12/22
SCALE AS SHOWN
JOB NO. 2181.PRJ
SHEET TITLE:
LIFE SAFETY PLAN
LEVEL 2
SHEET NUMBER:
LS 02.2